

Hamilton Island State School

Queensland State School Reporting

2013 School Annual Report



Postal address	PO Box 192 Hamilton Island 4803
Phone	(07) 4946 9522
Fax	(07) 4946 9533
Email	the.principal@hamiislass.eq.edu.au
Webpages	Additional reporting information pertaining to Queensland state schools is located on the My School website and the Queensland Government data website.
Contact Person	Michael Allan, Principal

Principal's foreword

Introduction

Welcome to Hamilton Island State School. Our school's students, families, staff and broader community are really proud of our school situated on the beautiful Hamilton Island in the Whitsundays. At Hamilton Island State School we are focused on providing an inclusive, safe, supportive and connected learning environment to educate the 'whole child' to be a successful citizen of the future. We use our 6 Pillars_of school wide pedagogy, 5 Givens for every learning environment and 4 Imperatives for student engagement to drive very high levels of academic improvement and performance for each student.

This school annual report contains information for parents and our community on the achievements of the school over the past 12 months. It draws on information from the National Assessment Program in Literacy and Numeracy (NAPLAN) for years 3, 5 and 7, School Opinion Survey data and school based information.

This report highlights the continuing very high standard of work from our staff and students and the support offered by parents and the community.

Our belief is that 'Every child matters every lesson, every day and can be a high achiever'
Our committed staff and supportive parent group work together to ensure our students have the best possible learning opportunities every lesson, every day.

School progress towards its goals in 2013

Some highlights for 2013 included:

- Positive and productive parent/teacher/student relationships.
- Excellent improvement in our Teaching and Learning Audit.
- Implementation of our new School Wide Positive Behaviour Support Program, which led to excellent results in our Discipline Audit.
- Excellent achievement in Years 3, 5 & 7 National tests.
- Excellent improvement in reading across all year levels.
- Great professional development opportunities for staff in the area of Explicit Instruction.
- Implementation of a whole school Pedagogical Framework.

Queensland State School Reporting 2013 School Annual Report



Key Priorities from the 2013 Annual Implementation Plan:	2014 Status
Reading – focus on explicitly teaching the six areas of reading.	Implemented
Implementation of a whole school Pedagogical Framework	Implemented
Capacity – build staff capacity through workplace performance plans, Professional Development and school coaching and feedback model.	Established
Feedback – introduction of student individual learning goals.	Established
Parent and Community Engagement – maintain relationships between school and community.	Maintained
Integrate ICTs across the curriculum. (I pads and laptops)	Integrated



Improved community relationships

Introduced the inaugural Hamilton Island Wild Life Park Read-a-Thon



Improved Extra-Curricular Activities

Hamilton Island State School Leadership Program - Sailing



Integration of ICTs across the Curriculum

Students use ICTs daily as a way of working in all classrooms.



Implementation of a whole school pedagogical framework

The school pedagogical framework is now implemented in each classroom across the school.

Queensland State School Reporting

2013 School Annual Report



Future outlook

Our focuses for 2014:

Great Results Guarantee

- Maintain current 100% of students at and above National Minimum Standards in NAPLAN Reading and Numeracy in Year 3 in 2014.
- Increase the percentage of students in the NAPLAN upper two bands in reading from 28.6% to 46% for Year 3 students within two years.
- Increase the percentage of students in the NAPLAN upper two bands in numeracy from 0% to 32% for Year 3 students within two years.
- Improve teacher capability through focused coaching and professional development to improve student performance. Develop learning plans for students who may fall below the National Minimum Standard for Reading and Numeracy.

Key Priorities for 2014 out of the Annual Implementation Plan (AIP)

Reading and Numeracy

- Implement Parameters 2. Embedded Instructional Coaches and 3. Blocks of Uninterrupted Instructional Time from Sharratt, L & Fullan, M - Putting Faces on the Data, to drive Reading and Numeracy improvement for all students.
- Reading – set clear NAPLAN and diagnostic targets for each student and continue to focus on explicitly teaching the six areas of reading.
- Numeracy – set clear NAPLAN, level of achievement and diagnostic targets for each student and focus on explicitly teaching foundation concepts and problem solving strategies.

Promoting quality teaching and learning in classrooms

- Develop a coaching framework to build teacher capacity and embed the school's pedagogical framework in each classroom.
- Embed strategies to identify individual skill gaps in student learning and differentiate C2C units for all students.

Attendance

- Continue to implement and embed a clear attendance strategy.

Continue to embed foundation learning programs:

- Jolly phonics in prep and year 1
- Spelling Mastery in prep to year 7
- QAR and Cars and Stars Reading Comprehension strategies in prep to year 7
- Connecting Math Concepts in prep to year 4
- Elementary Math Mastery in years 5 to 7
- Align NAPLAN preparation within everyday teaching and learning
- Maths Mate homework program in years 1 to 7

School Profile

Coeducational or single sex: Coeducational

Year levels offered in 2013: Prep Year - Year 7

Total student enrolments for this school:

	Total	Girls	Boys	Enrolment Continuity (Feb – Nov)
2011	38	22	16	83%
2012	44	19	25	98%
2013	54	22	32	81%

Student counts are based on the Census (August) enrolment collection.

Characteristics of the student body:

In 2013 the school had a Prep-1 class, 1-2 class and a 3-7 class. The student body is composed of residents of Hamilton Island. The majority of the students are from families with at least one member working for Hamilton Island Enterprises and therefore live in close proximity to each other in staff accommodation.

Within our student population there is a core group of long term students and a relatively high transient student population. Due to this, our school numbers fluctuate – typically around 50 students at any given time.

Average Class sizes

	Average Class Size		
	2011	2012	2013
Prep – Year 3	18	11	17
Year 4 – Year 7 Primary			11
Year 7 Secondary – Year 10			
Year 11 – Year 12			

School Disciplinary Absences

Disciplinary Absences	Count of Incidents		
	2011	2012	2013
Short Suspensions - 1 to 5 days	0	0	0
Long Suspensions - 6 to 20 days	0	0	0
Exclusions	0	0	0

Our school at a glance

Cancellations of Enrolment	0	0	0
----------------------------	---	---	---

Curriculum offerings

Our distinctive curriculum offerings:

- Ability levelled reading classes from 9:10a.m. to 9:40a.m. Monday to Thursday (classes reviewed each term)
- Ability levelled spelling classes from 10:30a.m. to 11:00a.m. Monday to Thursday (classes reviewed each term)
- Ability levelled mathematics foundation skills classes from 11:45a.m. to 12:30p.m. Monday to Wednesday (classes reviewed each term)
- Curriculum into the Classroom implemented in English, Mathematics, Science, History and Geography aligned to the Australian Curriculum and planned by Education Queensland.
- Collaboratively planned and intellectually challenging units of work for the subjects: HPE, LOTE, SOSE, The Arts and Technology. All units are aligned to the Queensland Curriculum Assessment and Reporting Framework.
- Japanese language offered for all students in years 5 to 7.
- Environmental sustainability embedded across the school.
- Reef Guardian Program.
- Gifted and Talented Program.
- English as an additional language program.

Extra curricula activities:

- Under 8's day
- Leadership Sailing Program (Term 2 and 3) – Years 4 to 7
- School camp – to Townsville (Term 3)
- Fortnightly Electives (gardening, art and craft, cooking, sports, Spanish, ukulele, guitar, choir, animals and wildlife studies and a science group)

We also have developed close partnerships with the Hamilton Island Sports Club and Concessionaire businesses to offer the following activities to our students before and after school: Karate, little athletics, tennis, swimming, touch football, drama club, dance club and netball.

How Information and Communication Technologies are used to assist learning:

Hamilton Island State School in conjunction with our P&C have a strong commitment to integrating ICTs in each classroom across our school curriculum. We have invested a considerable amount of time and money over the past three years to purchase equipment and develop teachers' professional knowledge.

Our students currently have access to the following device ratios:

- Interactive whiteboard in each classroom
- Ipad ratio of 1:3 students
- Laptop ratio of 1:3 students

Programs are also used to assist students with English, Mathematics and Science:

- Fitzroy Readers Apps on the Ipads
 - Various Ipad apps are installed on each Ipad to ensure students consolidate the key skills taught
 - Reading Eggs
 - Mathletics
 - ACER testing (English, Mathematics and Science)
-

Our school at a glance

Social climate

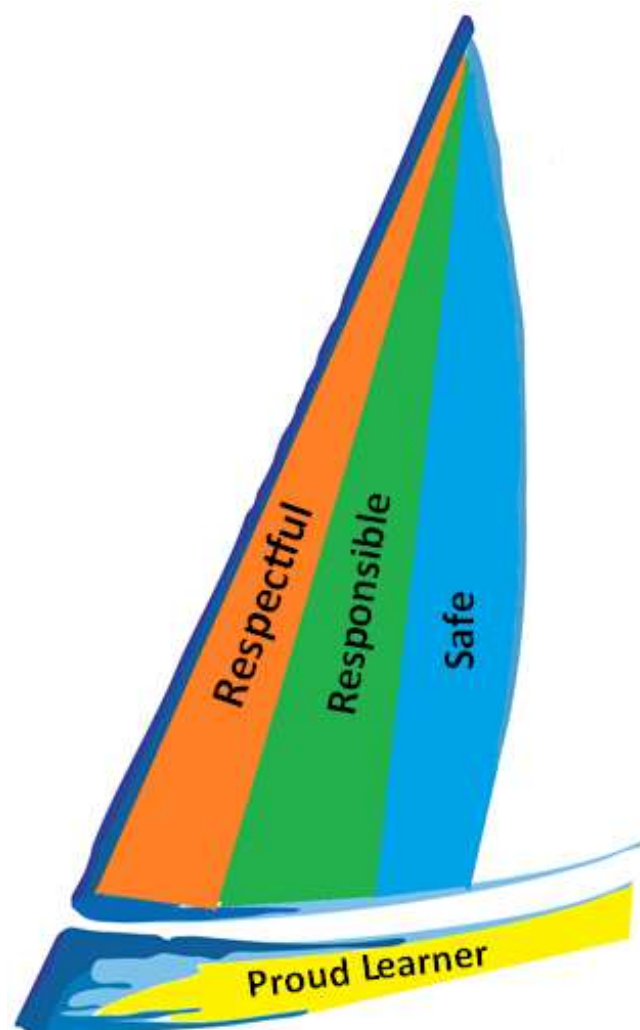
At Hamilton Island State School we ensure a positive and supportive school climate where strong citizenship and quality learning is a key priority for students, teachers, parents and carers. We believe that in order for students to learn effectively they need to:

- Be a Proud Learner who is:
- Respectful
- Responsible
- and Safe

We complement the work done by parents at home by actively teaching these expectations in our classrooms. We use the Hi 5 resilience strategy to explicitly teach our students strategies to respond to bullying.

Student Leadership:

Leadership qualities are strongly emphasised in students here at Hamilton Island State School. Students are continually encouraged to be organised, show initiative, treat people fairly and display courage by 'giving things a go'. Students are encouraged to consider themselves as 'ambassadors' of the school whenever they are in uniform and be great role models to other children. Each year all our student leaders are eligible to apply to be included in the Hamilton Island State School Sailing Leadership Program. Further leadership programs provide students in Year 5, 6, and 7 with opportunities to develop leadership skills and contribute to school decisions. Peer leaders and student leaders assist the early year's students with games and social skills as well as raising funds for our school.



Parent, student and staff satisfaction with the school

Our 2013 results have maintained the very high levels of satisfaction achieved in 2012. These results indicate that our students, staff and parents are extremely satisfied with our school and the direction we've taken in the last two years.

Performance measure (Nationally agreed items shown*)

Percentage of parents/caregivers who agree that:	2012	2013
their child is getting a good education at school (S2016)	100%	100%
this is a good school (S2035)	100%	100%
their child likes being at this school* (S2001)	100%	100%
their child feels safe at this school* (S2002)	96%	100%
their child's learning needs are being met at this school* (S2003)	100%	96%
their child is making good progress at this school* (S2004)	100%	96%
teachers at this school expect their child to do his or her best* (S2005)	100%	100%
teachers at this school provide their child with useful feedback about his or her school work* (S2006)	100%	96%
teachers at this school motivate their child to learn* (S2007)	100%	100%
teachers at this school treat students fairly* (S2008)	96%	96%
they can talk to their child's teachers about their concerns* (S2009)	100%	100%
this school works with them to support their child's learning* (S2010)	100%	100%
this school takes parents' opinions seriously* (S2011)	100%	100%
student behaviour is well managed at this school* (S2012)	100%	100%
this school looks for ways to improve* (S2013)	100%	100%
this school is well maintained* (S2014)	96%	92%

Performance measure (Nationally agreed items shown*)

Percentage of students who agree that:	2012	2013
they are getting a good education at school (S2048)	90%	100%
they like being at their school* (S2036)	100%	94%
they feel safe at their school* (S2037)	90%	89%
their teachers motivate them to learn* (S2038)	100%	100%
their teachers expect them to do their best* (S2039)	100%	100%
their teachers provide them with useful feedback about their school work* (S2040)	100%	100%
teachers treat students fairly at their school* (S2041)	90%	82%
they can talk to their teachers about their concerns* (S2042)	70%	94%
their school takes students' opinions seriously* (S2043)	100%	82%
student behaviour is well managed at their school* (S2044)	80%	82%

Our school at a glance

their school looks for ways to improve* (S2045)	100%	100%
their school is well maintained* (S2046)	90%	88%
their school gives them opportunities to do interesting things* (S2047)	100%	94%

Performance measure

Percentage of school staff who agree that:		2013
they enjoy working at their school (S2069)		100%
they feel that their school is a safe place in which to work (S2070)		100%
they receive useful feedback about their work at their school (S2071)		100%
students are encouraged to do their best at their school (S2072)		100%
students are treated fairly at their school (S2073)		100%
student behaviour is well managed at their school (S2074)		100%
staff are well supported at their school (S2075)		100%
their school takes staff opinions seriously (S2076)		100%
their school looks for ways to improve (S2077)		100%
their school is well maintained (S2078)		80%
their school gives them opportunities to do interesting things (S2079)		100%

* Nationally agreed student and parent/caregiver items were incorporated in the School Opinion Survey in 2012.

Percentage of respondents who Somewhat Agree, Agree or Strongly Agree with the statement. Due to a major redevelopment of the surveys (parent/caregiver and student in 2012; staff in 2013), comparisons with results from previous years are not recommended.

DW = Data withheld to ensure confidentiality.

Involving parents in their child's education

At Hamilton Island State School we strongly value the partnerships we have with our parents and broader school community. Parents and caregivers at Hamilton Island expect a well-disciplined, well organised, academically rigorous and caring learning environment that caters for the learning needs of their children. Our school has implemented a range of strategies to ensure that our parents are well informed and involved in our school. These include:

- Reporting to our Parents and Citizens Association monthly
- Classroom open days at the beginning of the year to welcome parents into their new year level and to find out about the curriculum, expectations and routines of their child's new class.
- Parent Teacher Conferences twice per year
- Parent Handbook available on the school website
- Monthly School Newsletters
- Fortnightly Assemblies
- School website
- Display of current units of work and expectations
- Parent Conferences in identified areas of the school improvement agenda.

Parents are also encouraged to be partners in their child's education through:

- Active membership in our Parents and Citizens Association
- As classroom volunteers in morning reading classes
- By attending curriculum culmination activities
- Providing voluntary support and supervision on class excursions
- Supporting students with Special Needs

Support teachers in delivering extra-curricular activities in their particular area/s of expertise



Reducing the school's environmental footprint

Hamilton Island State School has developed a School Environmental Management Plan (SEMP) outlining how the school will reduce its environmental footprint. This will continue to be implemented during 2014.

	Environmental footprint indicators	
	Electricity kWh	Water kL
2010-2011	0	0
2011-2012	29,458	176
2012-2013	25,960	84

The consumption data is sourced from the validated utilities expenditure return which the school submits at the end of each financial year. The data provides an indication of the consumption trend in each of the utility categories which impact on the schools environmental footprint.

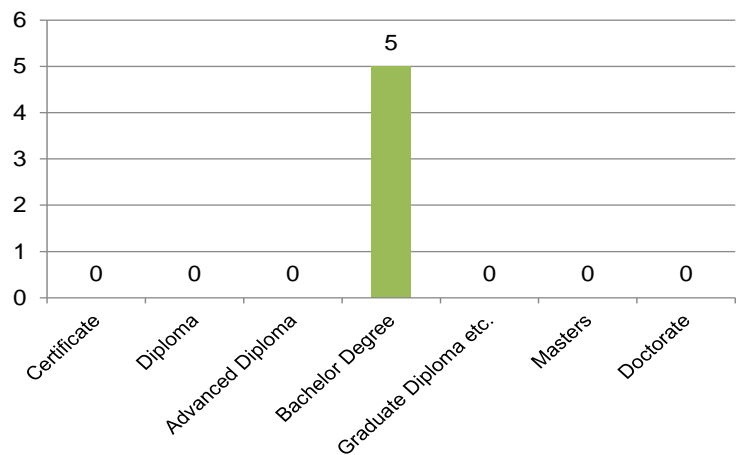
Our staff profile

Staff composition, including Indigenous staff

2013 Workforce Composition	Teaching Staff *	Non-teaching Staff	Indigenous Staff
Headcounts	5	6	0
Full-time equivalents	4	3	0

Qualifications of all teachers

Highest level of attainment	Number of Teaching Staff *
Certificate	0
Diploma	0
Advanced Diploma	0
Bachelor Degree	5
Graduate Diploma etc.	0
Masters	0
Doctorate	0
Total	5



* Teaching Staff includes School Leaders

** Graduate Diploma etc. includes Graduate Diploma, Bachelor Honours Degree, and Graduate Certificate

Our staff profile

Expenditure on and teacher participation in professional development

The total funds expended on teacher professional development in 2013 were **\$7977.49**

The major professional development initiatives are as follows:

The major professional development initiatives are as follows:

- Reading
- Writing
- Hamilton Island State School Pedagogical Framework
- Explicit Instruction

The proportion of the teaching staff involved in professional development activities during 2013 was 100%.

Average staff attendance

	2011	2012	2013
Staff attendance for permanent and temporary staff and school leaders.	95%	98%	99%

Proportion of staff retained from the previous school year

From the end of the previous school year, 100% of staff was retained by the school for the entire 2013 school year.

School income broken down by funding source

School income broken down by funding source is available via the *My School* website at <http://www.myschool.edu.au/>.

To access our income details, click on the *My School* link above. You will then be taken to the *My School* website with the following 'Find a school' text box.

Find a school

Search by school name

Search by suburb, town or postcode

Sector Government
 Non-government

Where it says '**Search by school name**', type in the name of the school you wish to view, and select **<GO>**. Read and follow the instructions on the next screen; you will be asked to accept the **Terms of Use** and Privacy Policy before being given access to the school's *My School* entry web page.

School financial information is available by selecting '**School finances**' in the menu box in the top left corner of the school's entry web page. If you are unable to access the internet, please contact the school for a paper copy of income by funding source.

Key student outcomes

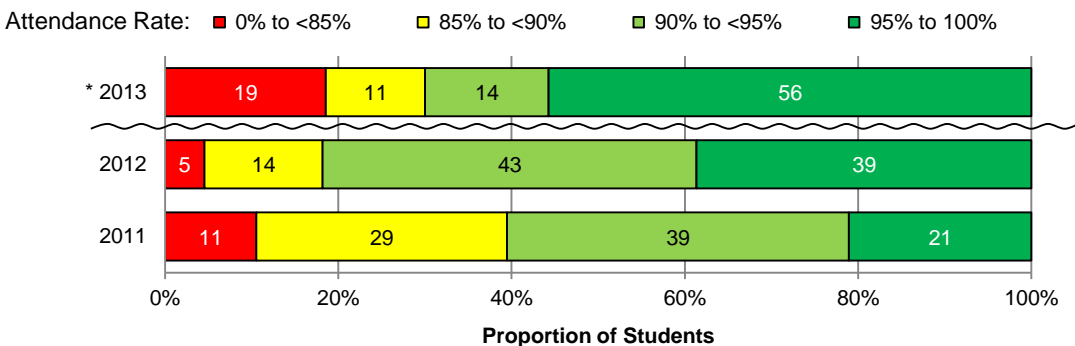
Student attendance rate for each year level (shown as a percentage)

	Year 1	Year 2	Year 3	Year 4	Year 5	Year 6	Year 7
2011	88%	92%	91%	91%	88%	94%	87%
2012	92%	92%	96%	94%	94%	DW	95%
2013	89%	91%	95%	95%	89%	82%	96%

DW = Data withheld to ensure confidentiality.

Student Attendance Distribution

The proportions of students by attendance range.



* The method for calculating attendance changed in 2013 – care should be taken when comparing data from 2013 to that of previous years.

Description of how non-attendance is managed by the school

Non-attendance is managed in state schools in line with the DET policies, SMS-PR-029: Managing Student Absences and SMS-PR-036: Roll Marking in State Schools, which outline processes for managing and recording student attendance and absenteeism.

At Hamilton Island our community and school belief is 'Every Child Matters Every Day. Student attendance is monitored in alignment with the DET policies. The administration team, follow strict school policies around monitoring and following up student absences.

National Assessment Program – Literacy and Numeracy (NAPLAN) results – our reading, writing, spelling, grammar and punctuation, and numeracy results for the Years 3, 5, 7 and 9.

Our reading, writing, spelling, grammar and punctuation, and numeracy results for the Years 3, 5, 7 and 9 are available via the My School website at <http://www.myschool.edu.au/>.

To access our NAPLAN results, click on the *My School* link above. You will then be taken to the *My School* website with the following 'Find a school' text box.

Performance of our students

Find a school

Search by school name

Search by suburb, town or postcode

Sector Government
 Non-government

Where it says '**Search by school name**', type in the name of the school whose NAPLAN results you wish to view, and select **<GO>**.

Read and follow the instructions on the next screen; you will be asked to accept the **Terms of Use** and Privacy Policy before being able to access NAPLAN data.

If you are unable to access the internet, please contact the school for a paper copy of our school's NAPLAN results.

Achievement – Closing the Gap

At Hamilton Island State School we are aware and endorse the 'Closing the Gap' strategy for Indigenous students. We currently have no indigenous enrolments at the school; however we are prepared to implement any necessary provisions to support Indigenous learning outcomes.